



CONNEX 3D™ (CD3D)

Flexible Process Meter



CONNEX™ series of digital monitors and displays offer a wide variety of analog and pulse inputs as well as Modbus® RTU serial communication, an easy-to-read dual-line display, UL/c-UL listing and CE marking, and a durable NEMA 4X front. All CONNEX models are also available with optional SunBright® sunlight readable displays that can be viewed in direct sunlight. The CONNEX series is available with up to 4 relays onboard and a 4-20 mA output. The dual-line display is useful in both programming and operating mode. In programming mode, the second line shows context for the current menu. In operating mode, the simplest use of the dual-line display is to display a unit tag below the process variable. A more advanced use for the dual-line feature is the CONNEX unique dual-scaling capability, which allows the two lines to read different scales for the same input.

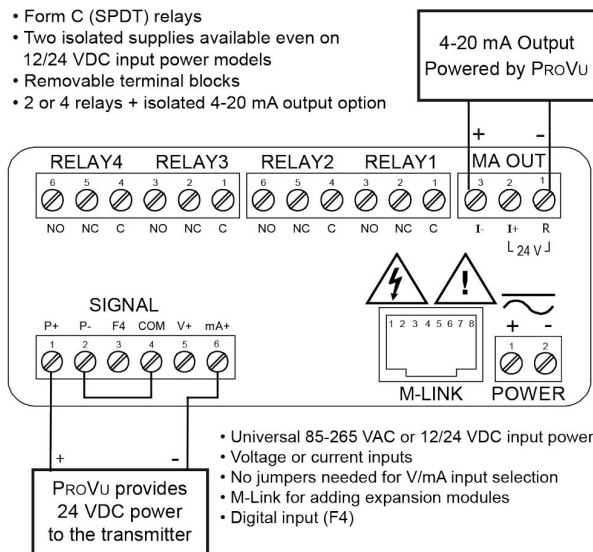
The CONNEX™ has the added dimension of wired or wireless monitoring with or without local or remote field display for added versatility. All configurations of the monitoring system are provided with either PC software or cloud-based web portal for monitoring, data gathering, data reporting, alarm alerting via SMS and email, alarm historian for post-mortem analysis. FLO-CORP's cost-saving hardware and software design provides process control and factory automation solutions so you can seamlessly switch from other transmitting devices to the new CONNEX™ monitoring and control solution.

FEATURES & BENEFITS

- 1/8 DIN Digital Panel Meter with NEMA 4X, IP65 Front
- 0-20 mA, 4-20 mA, 0-5 V, 1-5 V, and ± 10 V Field Selectable Inputs
- Dual-Line 6-Digit Display, 0.6" (15 mm) & 0.46" (12 mm)
- Isolated 24 VDC @ 200 mA Transmitter Power Supply
- 2 or 4 Relays with Interlocking Capability + Isolated 4-20 mA Output Options
- Free PC-Based, On-Board, MeterView Pro USB Programming Software
- No Assembly Required
- Optional SunBright Display Models for Outdoor Applications
- Operating Temp. Range: -40 to 65°C (-40 to 149°F)
- UL & C-UL Listed. E160849; 508 Industrial Control Equipment
- Input Power Options: 85-265 VAC / 90-265 VDC or 12-24 VDC / 12-24 VAC
- Display Input in Two Different Scales - Great for Level Applications
- Multi-Pump Alternation Control
- Round Horizontal Tank Formula; Just Enter Diameter & Length
- 32-Point Linearization, Square Root Extraction and Programmable Exponent Function
- Programmable Display, Function Keys & Digital Input
- External 4-Relay & Digital I/O Expansion Modules
- RS-232 & RS-485 Serial Communication Options with Modbus RTU
- Password Protection
- Wide Assortment of NEMA 4X Enclosures for up to Ten Meters
- Light / Horn & Reset Button Accessory
- Control Station Accessory For Remote Operation of ProVu
- Stainless Steel Sun Hood Accessory Available
- 3-Year Warranty

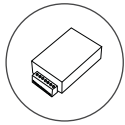
CONNEX™ Connections

****Connections shown with relay option**



CELLULAR (CELL)

The Cellular (CELL) Module turns the CONNEX™ process meter into a wireless remote monitor that communicates to field and host devices via RS485. Application data is wirelessly transmitted through cellular data to a cloud based server, allowing the user to monitor their application on a smart phone, tablet, or PC. The online portal allows the user to monitor multiple tanks, check the network status and battery levels, and view tank inventory and alarm information.

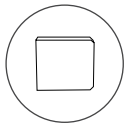


TCP/IP ETHERNET (C485)

The TCP/IP Ethernet (C485) Module provides serial server network connectivity for virtually any type of serial device. The TCP/IP serial server supports a wide range of protocols using serial tunneling. This feature enables the CONNEX™ Process Meter to communicate over TCP/IP as if they were communicating over a serial COM port.

Dual-Line Makes All the Difference

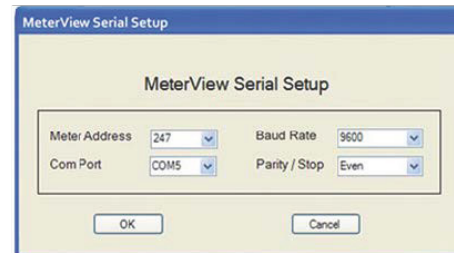
The CONNEX dual-line display makes all the difference both when programming the instrument and when using it in the field. When programming the instrument, the dual line display prompts for the needed information and also helps you keep track of where you are in the setup process. When using the instrument, the dual line display provides more information such as displaying the input in two different scales like height and volume for a level application. We call this the Dual-Scale feature.



DATA LOGGER (CDDL)

The Data Logger (CDDL) Module combines high performance and flexible configurations in one easy to use solid-state storage device. Using high accuracy digital serial data input from single or multiple devices that can be addressed monitoring up to 8 devices in one module. USB and RS-485 ports are built-in for easy plug-in connections to facilitate programming, realtime monitoring and PC interface for data logged downloads for remote and/or local retrieval of data.

MeterView Pro used for programming CONNEX



NOTE: For complete description, specifications, and more please see individual module specification sheet found at www.flo-corp.com/product-category/monitors

Transform a CONNEX panel meter housed in a NEMA 4X enclosure into an efficient pre-fabricated monitor that is field ready, without the need for time spent for field fabrication. The CONNEX system can be provided with a light/horn to boost visibility of alarm conditions, a button that connects to the meter's digital input to control or reset the alarms, and hole drilling on the enclosure for both the light/horn and button to make user installation and wiring quick and easy.

ORDERING INFORMATION

FLO-CORP MODEL NUMBER BUILDER

For Assistance Call **877.356.5463**

Example: **CD3D-AN1-HVHB-R4N-OE** CONNEX 3D™ CD3D with digital integral display, 1 analog inputs, AC POWER, 4-20 MA INPUT & OUTPUT, (4) relays, Pump Control, NO Data Logger, No Cellular, MOUNTED in an optimum NEMA 4X enclosure.

CD3D - - - - -

CD3D

DIGITAL DISPLAY MODULE (CDDM) (1) _____

IAN) Integral Display (2)
ID) Remote Display (NEMA 4X)

ANALOG INPUT MODULE

1) 1 analog input
2) 2 analog inputs
3) 3 analog inputs
4) 4 analog inputs

POWER SUPPLY MODULE _____

HV) AC Input
LV) DC Input

DISPLAY BRIGHTNESS

HB) High Brightness
SB) Standard Brightness

DATA LOGGER MODULE (CDDL) _____

DL) Data Logger
ND) No Data Logger

RELAY AND PUMP CONTROL MODULE (DXM1) _____

R) Pump Control
4) Number of Relays

CM) Wireless Cellular Model w/Antenna
(CELL)
N) No Wireless Communication

ENCLOSURE TYPE

PM) Panel Mount
CE) Compact (8" x 8" x 4.5") NEMA 4X
OE) Optimum (13" x 8" x 6") NEMA 4X

ORDERING NOTES

- (1) Select the best configuration based on your requirements
- (2) The Optimum Enclosure (OE) is required with integral display