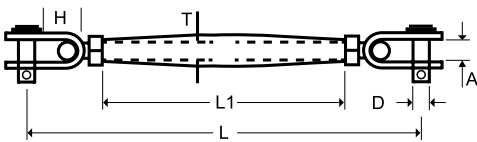


TANK FASTENING KIT (LTFKIT)

Compatible with Tracer 1000™ 3G GWR Level Transmitter

The Tracer 1000™ 3G cable weight tank fastening kit (LTFKIT) includes 2 eye bolts and 1 adjustable rigging lock.

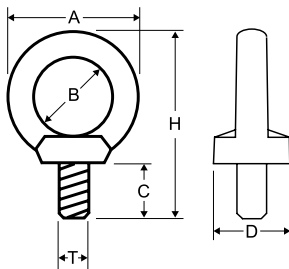
RIGGING LOCK



Dimensions	
T (thread)	M12
A	14mm (0.55")
D	12mm (0.47")
H	25mm (0.98")
L	252mm (9.9")
L1	150mm (5.9")

Recommended Working Load	983kg (1.05 ton)
Total Deformation Load	3750kg (4.13 ton)
Weight	576g (1.27lb)

EYE BOLT

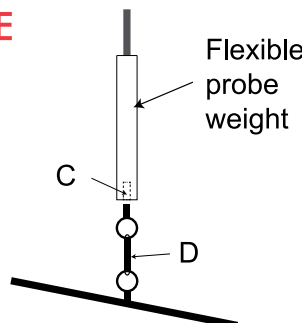


Dimensions	
T (thread)	M10
A	40mm (1.57")
B	25mm (0.98")
C	21mm (0.82")
D	20mm (0.79")
H	63mm (2.48")

Recommended Working Load	675kg (0.74 ton)
Total Deformation Load	2600kg (2.87 ton)
Weight	60g (0.13lb)

SECURING THE END OF PROBE

Securing flexible cable weight via M10 thread on base of weight is recommended to prevent movement.



C	M10 thread
D	Cable Weight Fastening Kit or appropriate O ring & link secured to vessel floor.

FORCES ON THE PROBE

Tensile forces are heavily dependent on the viscosity and abrasive characteristics of the product in the vessel. Ensure tensile loading is appropriate for the selected cable as well as the silo cover and mounting structure. In critical cases it is better to select the larger flexible cable (8mm).

Probe Type	Tensile Load
A04 / J04 (4mm flexible cable @ 20°C, 68°F)	0.5 Ton
A06 / J06 (6mm flexible cable @ 20°C, 68°F)	1.0 Ton
A08 / J08 (8mm flexible cable @ 20°C, 68°F)	4.0 Ton

Lateral forces can exist due to movement and gradual flow of the product in the vessel, particularly with powder and granular materials.

These forces can cause stress and strain on the probe, as well as the process fitting and mounting hardware. Ensure that lateral forces are minimized by following the installation guidelines and Placement Requirements.

Probe Type	Lateral Load
B04 / K04 (4mm rigid probe @ 20°C)	1 Nm
B06 / K06 (6mm rigid probe @ 20°C)	3 Nm
B08 / K08 (8mm rigid probe @ 20°C)	8 Nm

ORDERING INFORMATION

FLO-CORP MODEL NUMBER BUILDER

For Assistance Call **877.356.5463**

Example: LTFKIT The Tracer 1000™ 3G cable weight tank fastening kit (LTFKIT)
Includes 2 eye bolts and 1 adjustable rigging lock.

LTFKIT

LTFKIT (1) —————

Tank fastening kit for Tracer 1000™ 3G
GWR Level Transmitter

ORDERING NOTES

(1) Compatible with the Tracer 1000™ 3G Guided Wave Radar Level Transmitter