



CONNEX 3D™

WIRELESS CELLULAR MONITOR



DESCRIPTION

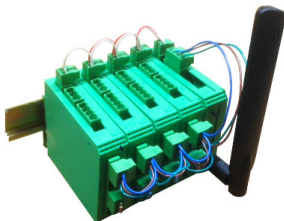
FLO-CORP introduces the patent pending CONNEX 3D™ Cellular Process Monitor. The industry's first process cellular monitor that communicates to field and host devices via RS485 and transmit wirelessly through cellular data transmission to cloud based server. The server data can be displayed on any PC, Smartphone, Tablet, any device with a Web Browser. From point A to point B, the CONNEX 3D provides the user flexibility to configure any standard analog input or RS485 Modbus input using a laptop or PC USB direct programming setup tool for monitoring setup and diagnostic interface. The CONNEX 3D Cellular Monitor offers the added benefit of connecting multiple field devices into one monitor for signal data plan networking measuring multiple field devices. The added cost savings of single data plan monitoring can now be a reality for multiple device applications such as tank farms, process flow monitoring, remote pump stations monitoring and more. Data gathering has never been easier. The CONNEX 3D cellular monitor includes a built-in data logger with up to 32,000 samples of data stored for field retrieval and/or cellular transmission in one upload. Now, even when cellular connectivity is lost, your measuring data isn't. The network capabilities are cutting edge, featuring compatibility with cellular networks, point-to-point networks, and wired networks. The CONNEX 3D Display, bright 6 digit LED field or panel display is compatible with the new CONNEX 3D modem so now the field signal can also be displayed in the field for plant operations and easy prompting of measurement conditions. FLO-CORP's cost-saving hardware and software design provides process control and monitoring, data gathering, data reporting, alarm alerting via SMS and email, alarm historian and more.

FEATURES & BENEFITS

- RS485 Field Connectivity
- 3G Frequency Bands with low power draw
- CDMA or GSM, LTE, Class 3
- FCC Part 15 Class B Compliant
- ATT and Verizon certified
- Simplify I/O management with innovative software
- Single or Multi-channel flow or level or any process monitoring
- Network compatible with cellular, point-to-point, and wired network
- Ships from factory pre-configured for customers application to ensure easy installation and setup
- 5 year warranty

ENCLOSURE OPTIONS

DIN RAIL MOUNT



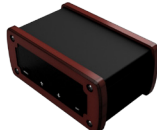
STAND ALONE



NEMA 4X ENCLOSURE



OPTIONAL DISPLAY



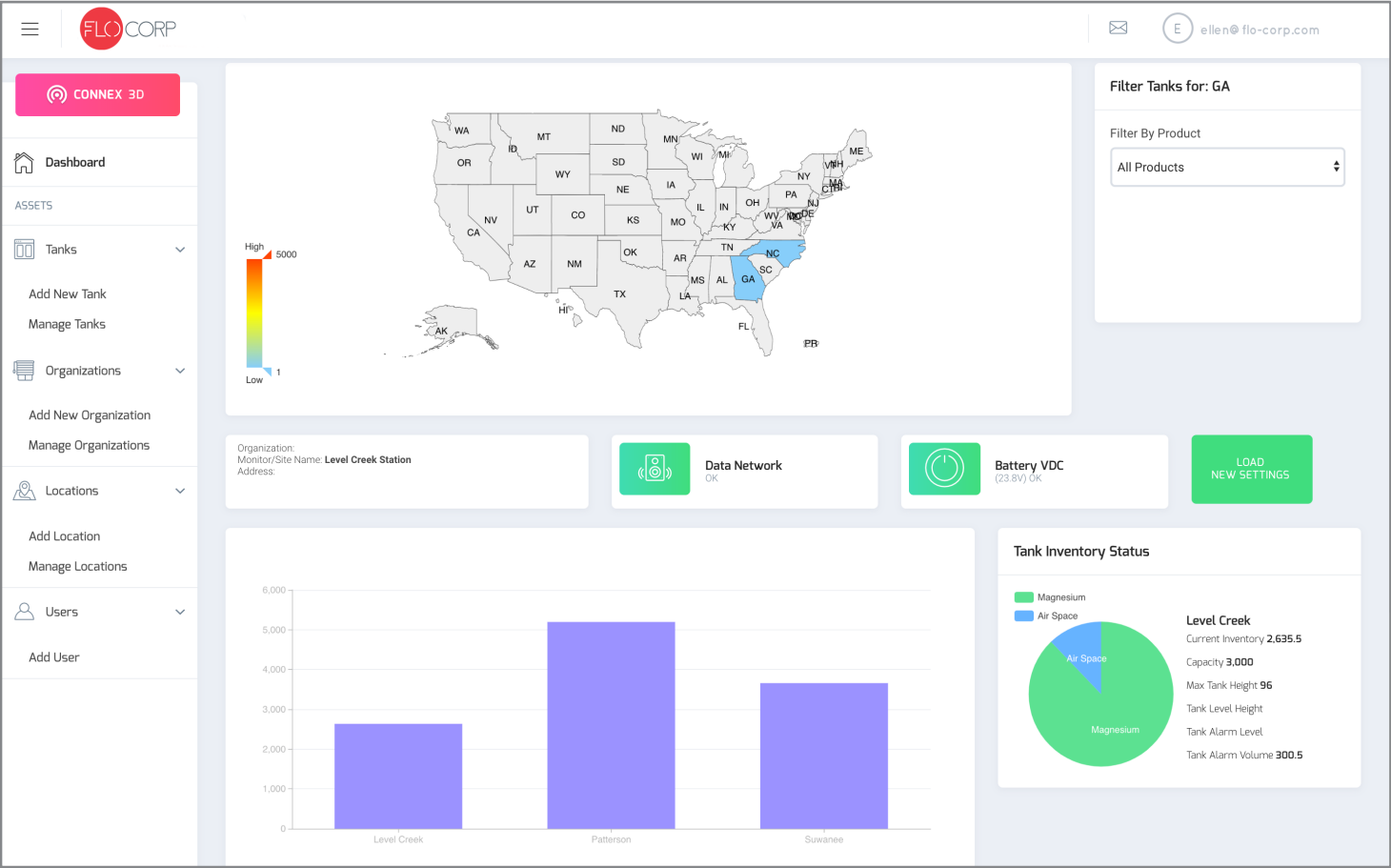
SPECIFICATIONS

CONNEX 3D FLEXIBLE CELLULAR MODULE		
	CD3D-ATT	CD3D-EV3
Performance	HSPA	EV-DO rev A
Frequency Bands	3G: 850/900/1700 2G: 850/900/1800/1900	800/1900
TCP/IP	FTP, SMTP, TCP, UDP	
Power Draw	5VDC, 19mA sleep, 28mA idle, 397mA max.	5VDC; 22mA sleep, 34mA idle, 423mA max.
Input Power	3.3V - 5VDC	3.3V - 5 VDC
Operating Temperature	-35 ^o to 185 ^o F	-40 ^o to 185 ^o F
Storage Temperature	-40 ^o to 185 ^o F	-40 ^o to 185 ^o F
Humidity	20% to 90% RH, non - Condensing	
EMC Compliance	FCC Part 15 Class B, EN55022, EN55024	FCC Part 15 Class B
Radio Compliance	FCC Part 22, FCC Part 24, RSS 132, RSS 133, EN 301 511, EN 301, 489-1, EN 301 489-7, EN 301 489-24	FCC Part 22, FCC Part 24
Network	PTCRB	N/A
Carrier	ATT, T-Mobile	Verizon, Sprint

Specifications are subject to change without notice.

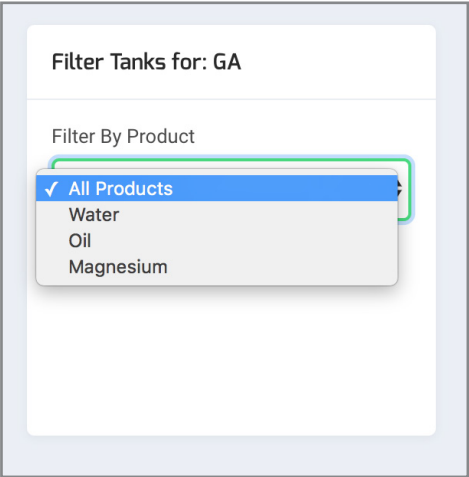
CONNEX 3D™ ONLINE TANK MONITORING SOFTWARE

FLO-CORP'S online tank and asset monitoring portal is online anything on the market today. The CON-NEX 3D™ software is able to monitor multiple tanks at one time, check network and battery status, view tank inventory, history, and alarm information. The cloud-based software can be accessed through a smart phone, tablet, or any device with a web browser.



Some Features of the CONNEX 3D™ Online Web Portal Include:

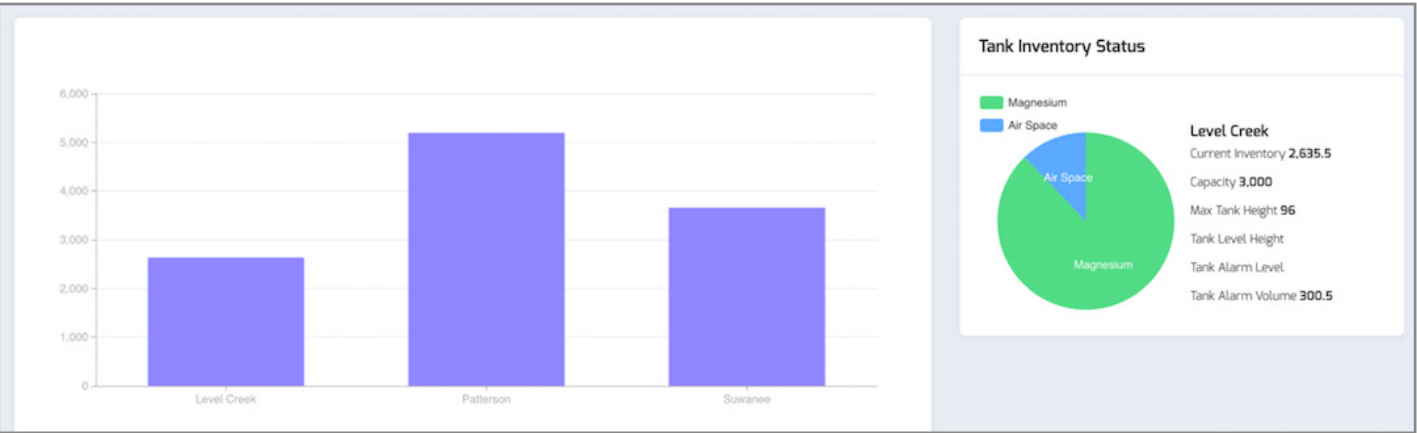
1) Filter tanks by product



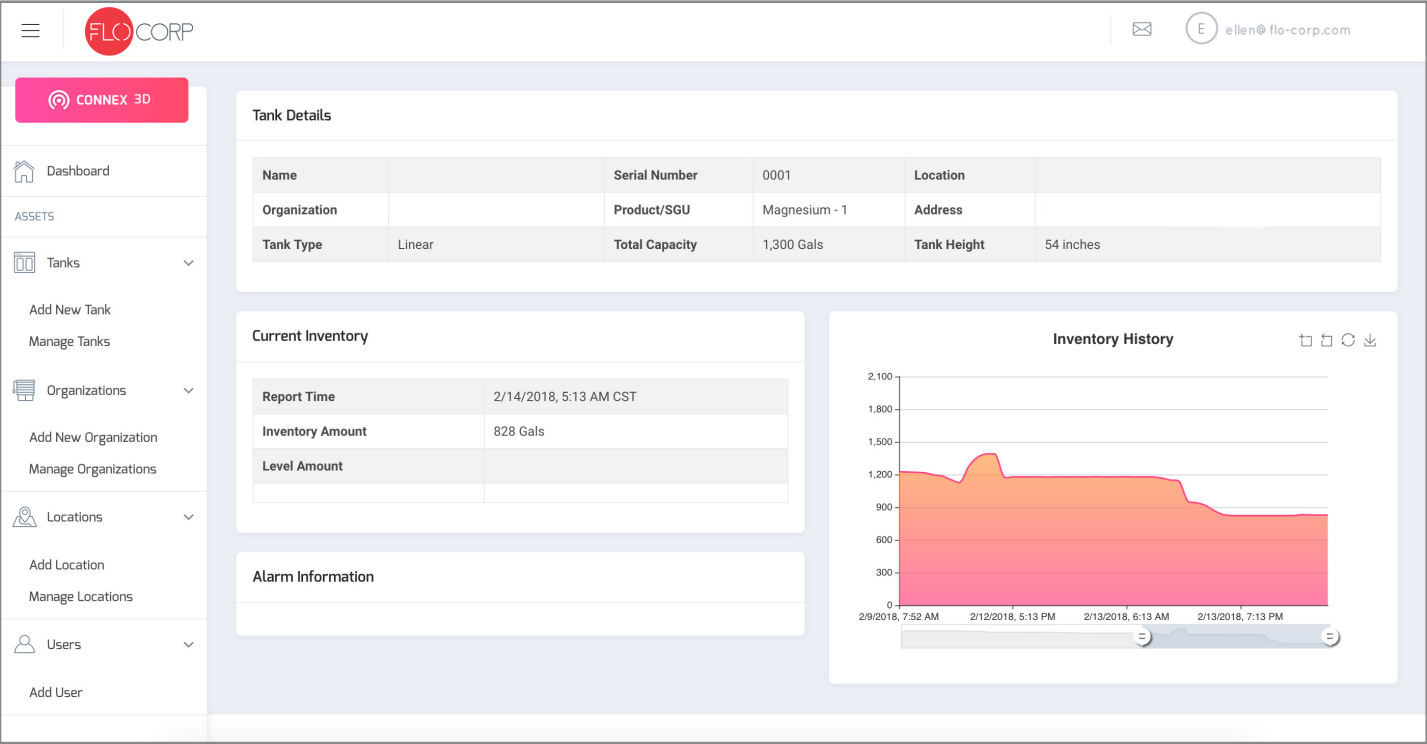
2) Check the network status and battery levels



3) Monitor multiple tanks at one time



4) View current tank inventory, inventory history, and alarm information



5) Manage your organization and add users to your portal

