

eXmod™ DXM1

RELAY EXPANSION MODULE



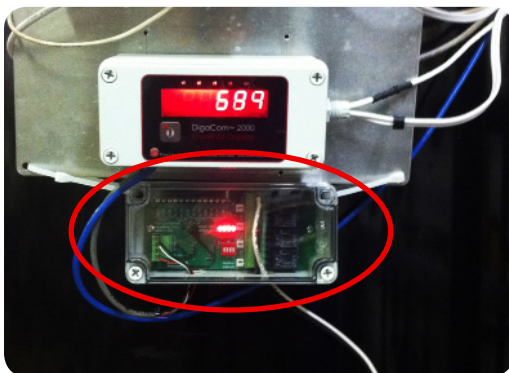
DESCRIPTION

The eXmod™ is a 4-relay output module that connects to select Universal Process Displays via RS-485 serial communication (4-wire). The eXmod is extremely versatile and can be mounted locally or remotely to allow for a purely distributed system. Display(s) can be mounted in the plant or control panel, while the eXmod can be mounted in the motor control cabinet for reduced cost of control wiring. Additionally, the eXmod's BIG 10 AMP AC/DC rated relays bring added value to your control/alarm monitoring/ batching systems.

FEATURES & BENEFITS

- Relay Setpoint for Rate or Total
- Auto or Manual Reset of Relay - Latching or Non-Latching Relay Logic or Pump Alternation
- Can Be Used as a Batch Controller
- NEMA 4X Enclosure
- Expands Capabilities of Universal Process Displays
- Increase Wiring Flexibility
- Stocking Efficiencies
- Economical Solution

APPLICATION PHOTO



The eXmod™ Relay Expansion Module shown in pump activation application

Specifications

Status Indicators	(4) Red LED Relay Indicators
User Interface	4 internal DIP Switches Used To Select ModBus® Address
Contact Form	SPDT
Relay Rating	5A @ 28 VDC; 5A @ 120/240 VDC at Max Ambient Temperature; NO Contact Rated at 10A @ 20°C
Operating Temperature	F: -40° to 149° C: -40° to 85°
Storage Temperature	F: -40° to 149° C: -40° to 85°
Relative Humidity	0-90%, non-condensing
Supply Voltage	12-24 VDC
Connection	Removable Screw Terminal; Accepts 12-22 AWG Wire
Enclosure Type	Panel/Field Mount
Enclosure Rating	NEMA 4X (IP65)
Enclosure Material	Polycarbonate
Classification	General Purpose
Display Compatibility	DigaCom 2000™ and DigaTouch™ Universal Process Displays Only

Specifications are subject to change without notice.

COMPATIBLE UNITS



DigaCom 2000™

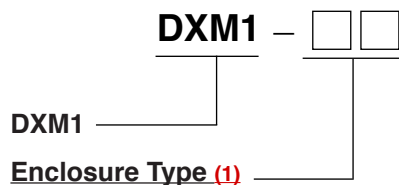
Ordering Information

FLO-CORP MODEL NUMBER BUILDER

For Assistance Call **877.356.5463**

Use the diagram below, working from left to right to construct your FLO-CORP Model Number.
Simply match the category number to the corresponding box number.

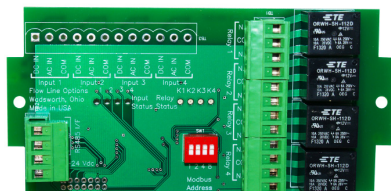
Example: **DXM1-NN** eXmod™ Expansion Module, General Purpose Enclosure



NN) General Purpose (No Enclosure - Surface Mount)

N4) NEMA 4X (IP65)

N7) NEMA 7



General Purpose Option



NEMA 4X Option

Ordering Notes:

(1) Select the best configuration based on your requirements