

## Installation of Tracer Talker

### Databases

Tracer Talker uses two Microsoft Access databases:

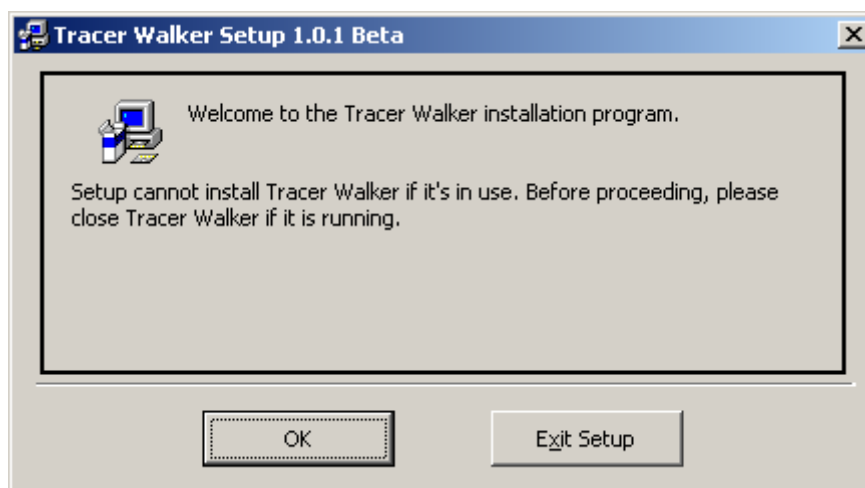
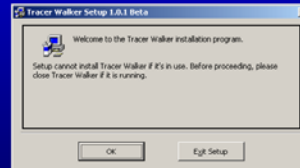
- **FloCorpTracerTalkerData** which stores memory map defined in Sultan unit, and **must not** be changed by user.
- **FloCorpTracerTalkerInfo** which stores customised data, such as client, site, device id, etc.

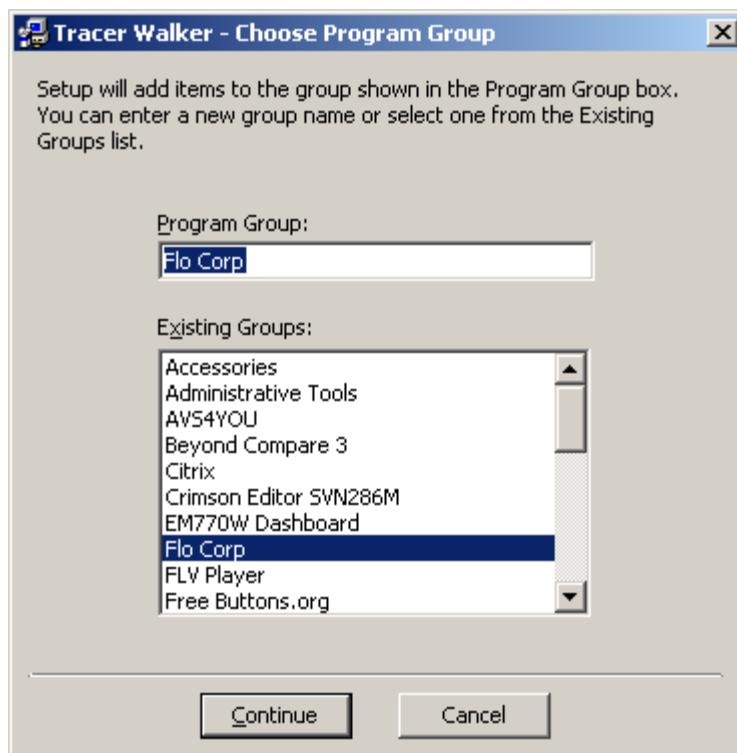
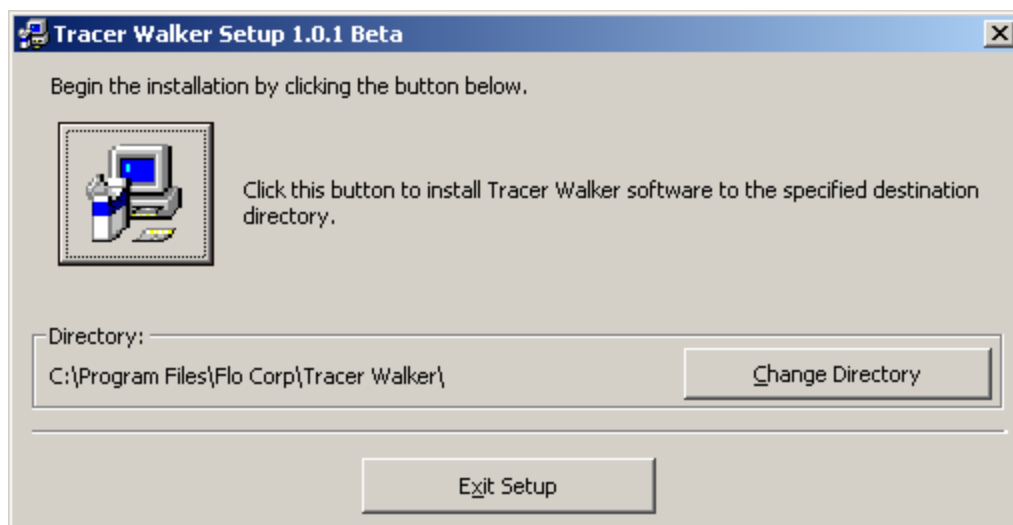
### Procedures taken to install Tracer Talker

Tracer Talker installation package comes in two ways, zip file or un-zip files.

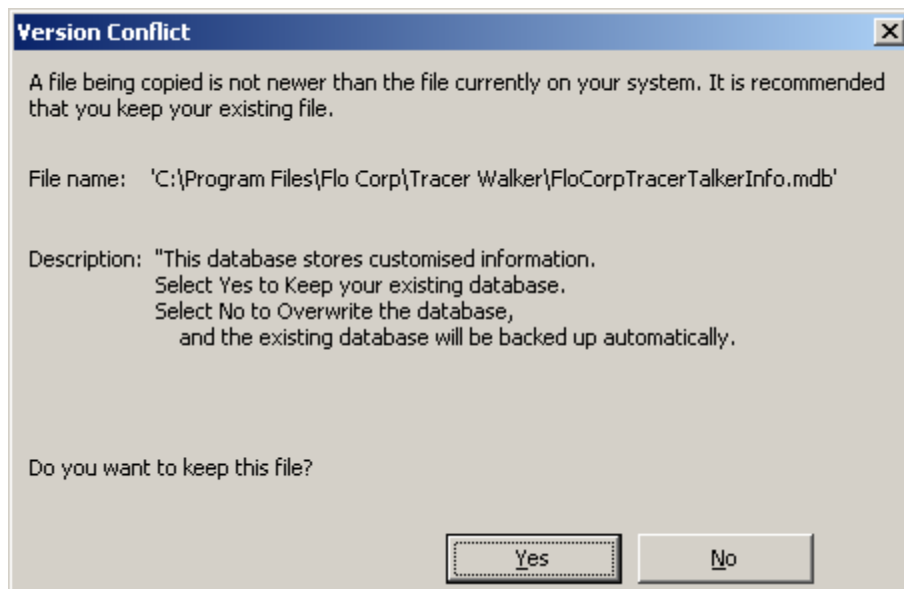
- If system has Trace Talker installed, before install Trace Talker, copy and paste database FloCorpTracerTalkerInfo.mdb into your backup folder. By default it is under C:\Program Files\Flo Corp\Tracer Talker\.
- Then go to Windows Start -> Control Panel -> Add or Remove Programs, and un-install current Tracer Talker used in the system.
- If installation file is zip file, then TracerTalker-x.x.x\_Beta.zip where x.x.x indicates Tracer Talker revision, otherwise, go to next step.
- Double click setup.exe file to install the new Tracer Talker. The program will be installed in C:\Program Files\Flo Corp\Tracer Talker\, refer to following images for more details.
- Follow information prompted to continue ...

## ***Tracer Walker Setup 1.0.1 Beta***





Message shown in following image only available when the PC has previous version of Tracer Talker installed, and data stored in FloCorpTracerTalkerInfo.mdb is modified by end user.



System continues installation till finished.

