



# MEMFlo™ MFHM

HIGH PRESSURE LIQUID AND GAS FLOW METER



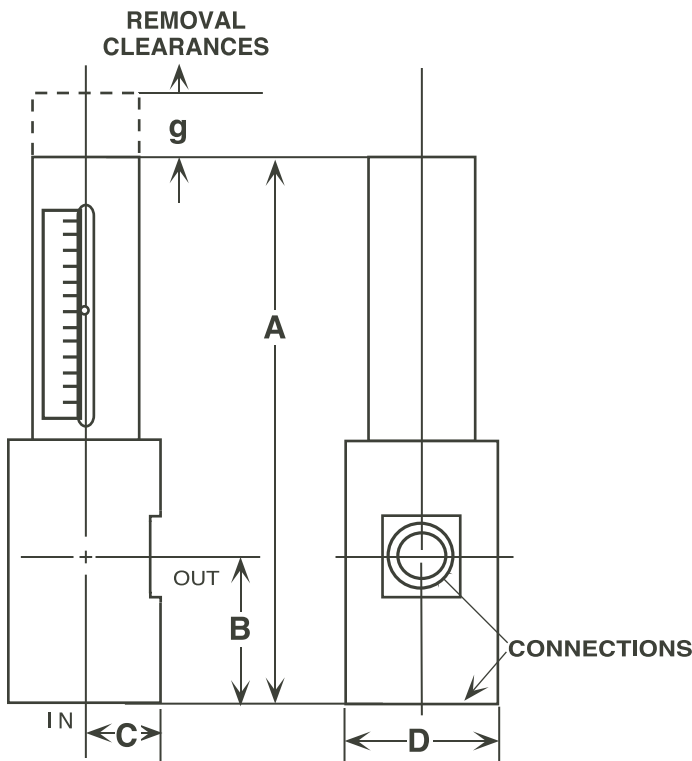
## DESCRIPTION

Offered in liquid and gas configurations, this flow meter is a great choice for a diverse range of flow services. Liquid examples include hydraulic oil, grease, solvents and dirty fluids including mild slurries. Gas examples include compressed air and digester gas. Each meter is built custom to your requirements. Typical applications include biodiesel fuel manufacturing, chemical processing, biomedical and hydraulic test stands.

## FEATURES & BENEFITS

- 304 stainless bodies & internals standard.
- Standard 1/2", 3/4" and 1" female NPT connections. Pipe adapters may be used for other sizes without affecting accuracy.
- 360° rotation of scales. Special scales for other units or fluids and multiple scaling offered.

## DIMENSIONS



## SPECIFICATIONS

<b>Accuracy</b>	±1% of 100% flow rate
<b>Repeatability</b>	± 1/2% of indicated flow rate
<b>Rangeability</b>	25 to 1 average
<b>Materials</b>	304 stainless steel for body and internals, except for electroless nickel plated or encapsulated rare earth magnet on the meter float.
<b>Temperature Rating</b>	Up to 300°F
<b>O-Rings</b>	Buna N standard; Viton, Ethylene-Propylene (EPR), Silicone, Neoprene, Kalrez and Teflon optional.

*Specifications are subject to change without notice.*

MATERIAL DESCRIPTION	A	B	C	D	g	Female NPT
Stainless Steel	11.8	3.07	1.28	2.75	3.00	04 (1/2")
	11.66	3.13	1.37	3.0	3.0	06 (3/4")
	12.23	3.5	1.46	3.25	3.0	08 (1")

# COMPLETE FLOW SYSTEMS AND ACCESSORIES

## MFT2™ TWO-WIRE FLOW TRANSMITTER

MOUNT TO YOUR VOLUMETRIC FLOW METER  
FOR OUTPUT FLOW RATE

### DESCRIPTION

The MFT2™ two-wire flow transmitter accurately calculates and outputs flow rate. Compatible with any MEMFlo variable area flow meter, MFT2™ combines FLO-CORP's time-proven variable area technology with a high tech processor and solid state circuitry. Each device includes an analog output that can be configured for 0-5 VDC, 0-10 VDC, or 4-20 mA current loop. Typical applications include pump flow output, compressed air consumption, cooling flow monitoring, steam flow usage/optimization and combustion gas metering.

### FEATURES & BENEFITS

- Non-contact sensor electronic
- Electronic signal conditioning circuit
- 3 output modes: 4-20mA, 0-5 VDC or 0-10 VDC
- Proportional analog output - two-wire, 4-20mA
- Designed to slip over any standard measuring tube
- Pre-calibrated from the factory for fast installation and start-up



### SPECIFICATIONS

General	
<b>Process Temperature</b>	F: -20° to 240° C: -29° to 116°
<b>Ambient Temperature</b>	F: -20° to 158° C: -29° to 70°
<b>Environmental</b>	Humidity: 0-90% non-condensing
<b>Accuracy</b>	±1% 0.25% rate
<b>Repeatability</b>	±0.10% rate
Electrical	
<b>Power Requirements</b>	0.5 VDC Output 10-30 VDC @ 3 wire 0-10 VDC Output 12-30 VDC @ 3 wire 4-20 mA Output loop-powered, 12 VDC - 30 VDC - 2 wire
<b>Power Consumption</b>	25 mA maximum
<b>Analog Outputs</b>	0-5 VDC and 0-10 VDC into 10,000 Ohms minimum; 4-20 mA into 1000 Ohms maximum
<b>Resolution</b>	1:4000
<b>Transmission Distance</b>	4-20 mA limited by cable resistance (4000') 0-5 VDC 1000 feet (330m) maximum 0-10 VDC 1000 feet (300m) maximum
<b>Circuit Protection</b>	Reverse polarity and current limiting
<b>Isolation</b>	Inherently isolated from the piping system
<b>Transient Over-Voltages</b>	Category 3, in accordance with IEC 64
<b>Temperature Drift</b>	50 ppm/°C (Max)
<b>Enclosure Rating</b>	NEMA 4 (IP67) ; NEMA 7



#### DigaCom™ 2000 Universal Process Display

is a field mount display that provides bright, 6-digit LED indication, internal DC power supply for transmitter power, 4-20mA repeat output and advanced communications. DigaCom features digital push button configuration, simple programming interface and Ethernet communication. This device is well suited for a variety of process applications. Typical applications include level monitoring, analytical measurements, flow, distance monitoring, pressure monitoring, weight/volume monitoring and temperature monitoring.



#### DigaLink™ 3.0 Alarm & Monitoring Software

is FLO-CORP's unique Alarm, Configuration and Monitoring Software. This enables users to receive e-mail alerts, configure, and remotely monitor from the convenience of their PC. DigaLink is unique in its communication protocol that utilizes both TCP/IP Ethernet communication and Modbus/RS485 serial communication simultaneously. This advanced software features e-mail alerts, display configuration, datalogging and real-time monitoring from unlimited devices. With DigaLink you can easily setup, monitor and receive e-mail alerts from practically anywhere.



#### eXmod™ Relay Expansion Module

is a 4-relay output module that connects to the display via RS-485 serial communication (4-wire). It is extremely versatile and can be mounted locally or remotely to allow for a purely distributed system. Display(s) can be mounted in the plant or control panel, while the eXmod can be mounted in the motor control cabinet for reduced cost of control wiring. Additionally, the eXmod's BIG 10 AMP AC/DC rated relays bring added value to your control/alarm monitoring systems.

# Ordering Information

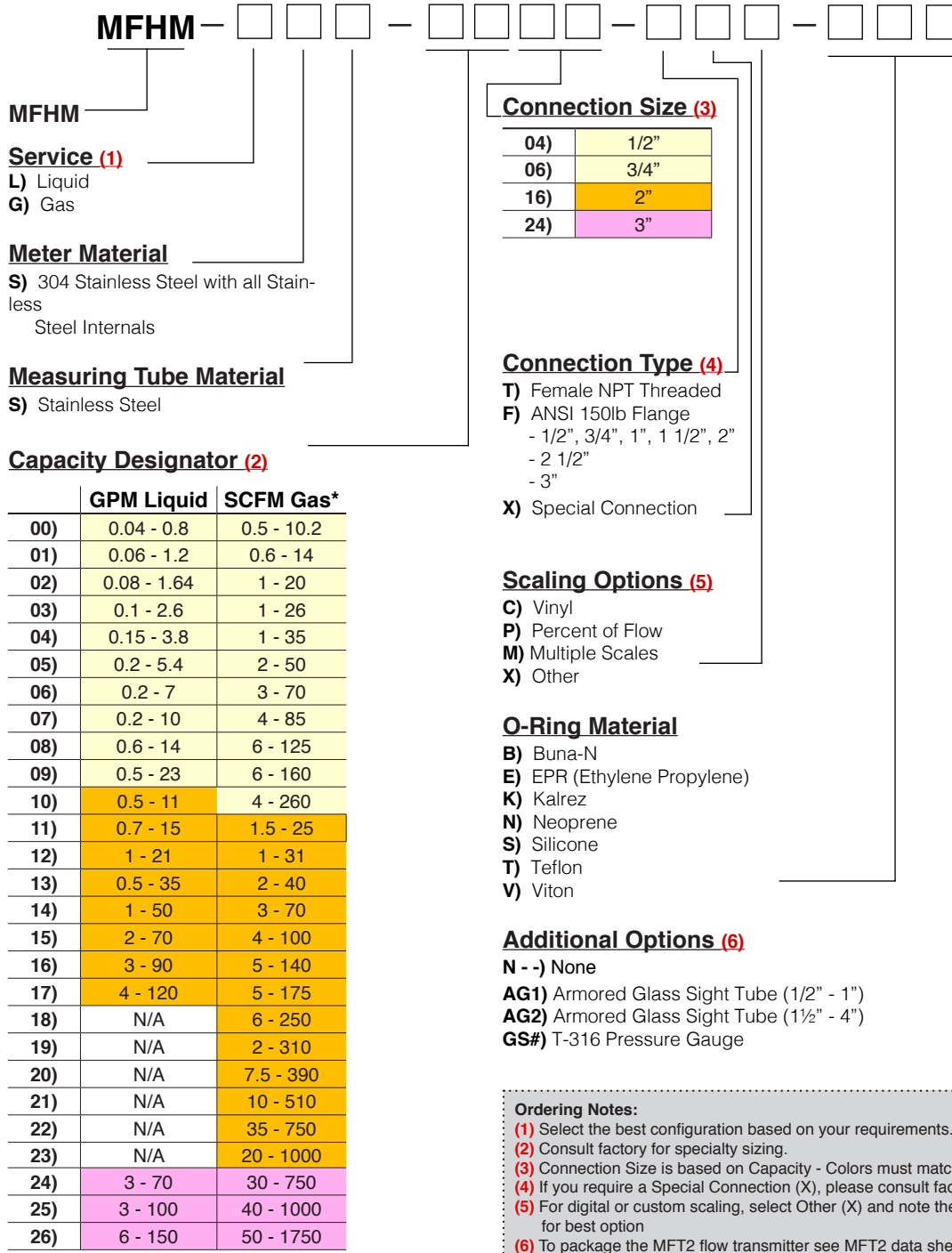
## FLO-CORP MODEL NUMBER BUILDER

For Assistance Call **877.356.5463**

Use the diagram below, working from left to right to construct your FLO-CORP Model Number.  
Simply match the category number to the corresponding box number.

**Example: MFHM-LSS-0004-TCV-N**

*MEMFlo™ MFHM High Pressure Flow Meter for Liquid Service, 304 Stainless Steel Meter Mateirla with Stainless Steel Measuring Tube Material, 0.04-0.8 GPM Liquid with 1/2" Connection Size, Female NPT Threaded Connection Type with Vinyl Scale and Viton O-Rings with no additional options*



**Ordering Notes:**  
(1) Select the best configuration based on your requirements.  
(2) Consult factory for specialty sizing.  
(3) Connection Size is based on Capacity - Colors must match to ensure compatibility.  
(4) If you require a Special Connection (X), please consult factory with your requirements.  
(5) For digital or custom scaling, select Other (X) and note the following requirements: Contact factory for best option  
(6) To package the MFT2 flow transmitter see MFT2 data sheet model number builder

**Note:** Match color with connection size.